

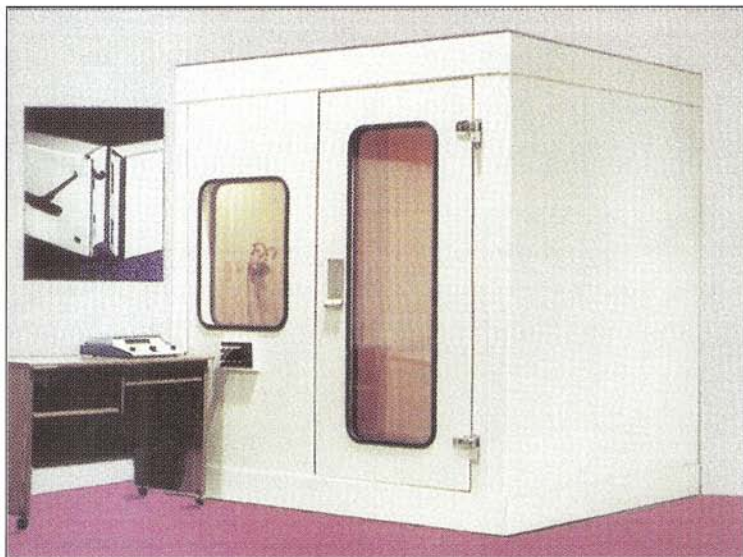
ECKEL AUDIOMETRIC ROOMS

OFFER OUTSTANDING NOISE REDUCTION

CL SERIES Panel System

QUALITY ENGINEERED SOUND ISOLATION ROOMS FOR

AUDIOLOGISTS ■ DOCTORS ■ HEARING AID SPECIALISTS ■ CLINICS



Innovative audiometric rooms and suites for all audiological measurements and research, combine excellent performance and versatile design. Choice of eight standard models of 4" thick single-wall Eckel Audiometric Rooms are offered to meet most needs.

EXCELLENT ACOUSTIC CHARACTERISTICS

Wall, ceiling and floor panels provide outstanding noise reduction. Panels are connected and secured to each other using a special cam locking panel design. The acoustic door, which incorporates a continuous magnetic seal, has an acoustic attenuation comparable to that of the walls.

COMPLETELY ISOLATED Structurally borne noise is effectively isolated through the independent floor by rubber-in-shear mounts.

VERSATILE The standard, built-in jack panel adapts to all audiometers. Doctors, audiologists and hearing aid dispensers not only can conduct a full range of diagnostic measurements necessary to properly fit a person with a

hearing aid, but also can perform all audiological assessments.

EXCELLENT VISIBILITY A 24" x 30" built-in double-glazed, 1/4" acoustic glass window assures the integrity of the room's performance and permits visual observation and monitoring, and also prevents any feeling of claustrophobia.

COMFORTABLE TO USE The spacious interior has an independent silenced power ventilation system with noise level below the binaural threshold of hearing. It supplies at least 12 air changes an hour, keeping the room fresh and pleasant.

IN-PLACE LIGHTING 2-bulb wall-mounted fixture provides good interior illumination.

ATTRACTIVE The interior and exterior of the rooms are finished with a durable paint to assure a handsome, long-lasting appearance. Choice of light beige, warm grey or powder blue.

NOISE REDUCTION

Hz	dB
125	19
250	30
500	39
1000	50
2000	58
4000	60

STANDARD FEATURES

- 34 1/2" x 73 3/4" clear opening door
- 24" x 30" double-glazed 1/4" acoustic window set in rubber gasket
- Jack panel
- Ventilation
- Lighting
- Carpeting
- Window in door option
- Easy to install, take down and move
- No caulking - acoustic seal between panels is accomplished with Acoustical Rubber Seals.
- Universal door system LHH or RHH
- Electricity: plug in and use
- Shipped in skids anywhere in North America.

When ordering, specify door swing (left hand or right hand). A sketch of the proposed arrangement of examination area will help ensure satisfaction.

ECKEL
INDUSTRIES OF CANADA LIMITED

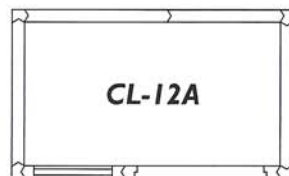
LOOK AT THESE PLANS AND CHOOSE ONE FOR YOUR OFFICE



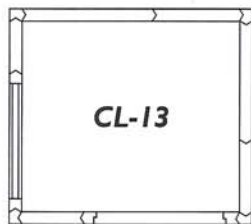
	W.	D.	H.
I.D.	1118 mm	838 mm	1981 mm
O.D.	1321 mm	1041 mm	2362 mm
I.D.	3' 8"	2' 9"	6' 6"
O.D.	4' 4"	3' 5"	7' 9"



	W.	D.	H.
I.D.	1397 mm	1118 mm	1981 mm
O.D.	1600 mm	1321 mm	2362 mm
I.D.	4' 7"	3' 8"	6' 6"
O.D.	5' 3"	4' 4"	7' 9"



	W.	D.	H.
I.D.	1956 mm	1118 mm	1981 mm
O.D.	2159 mm	1321 mm	2362 mm
I.D.	6' 5"	3' 8"	6' 6"
O.D.	7' 1"	4' 4"	7' 9"



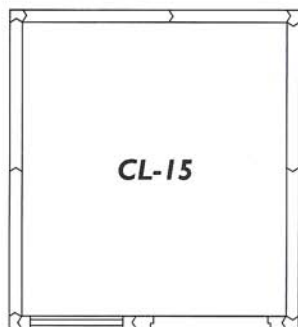
	W.	D.	H.
I.D.	1676 mm	1397 mm	1981 mm
O.D.	1880 mm	1600 mm	2362 mm
I.D.	5' 6"	4' 7"	6' 6"
O.D.	6' 2"	5' 3"	7' 9"



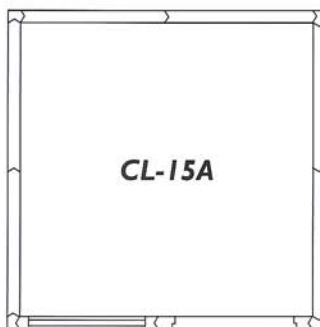
	W.	D.	H.
I.D.	1956 mm	1676 mm	1981 mm
O.D.	2150 mm	1880 mm	2362 mm
I.D.	6' 5"	5' 6"	6' 6"
O.D.	7' 1"	6' 2"	7' 9"



	W.	D.	H.
I.D.	1956 mm	1956 mm	1981 mm
O.D.	2159 mm	2159 mm	2362 mm
I.D.	6' 5"	6' 5"	6' 6"
O.D.	7' 1"	7' 1"	7' 9"



	W.	D.	H.
I.D.	1956 mm	2235 mm	1981 mm
O.D.	2159 mm	2438 mm	2362 mm
I.D.	6' 5"	7' 4"	6' 6"
O.D.	7' 1"	8' 0"	7' 9"



	W.	D.	H.
I.D.	2235 mm	2235 mm	1981 mm
O.D.	2438 mm	2438 mm	2362 mm
I.D.	7' 4"	7' 4"	6' 6"
O.D.	8' 0"	8' 0"	7' 9"

NOTE

Outside dimension of rooms includes the silencer.

On models CL-11 and CL-12, static silencer is in rear wall.

DEALER / DISTRIBUTOR



ECKEL
INDUSTRIES OF CANADA LIMITED

ECKEL

NOISE CONTROL TECHNOLOGIES

Engineered for high performance,
Ready to use, Unsurpassed in pre-assembled
audiometric booths



AUDIOMETRIC SCREENING BOOTHS

UNIQUE, PROVEN DESIGN

Unitized all-welded construction ensures reliable acoustic performance and dependable noise reduction.

SIZE

The Eckel Audiometric Booth maximizes interior space, yet is compact enough to readily pass through a standard door.

EASY, COMFORTABLE ACCESS

Large side entry door allows ease of access to persons of all ages. The Eckel Audiometric Booth's roomy

interior is spacious enough to accommodate a mother and child or an elderly person who would have difficulty entering and sitting in most mini booths.

OUTSTANDING PERFORMANCE

The Eckel Audiometric Booth has been specially engineered with features that maximize performance; double acoustic window, continuous magnetic seal on the access door, and silenced ventilation. The exclusive Eckel wall construction system ensures long-term acoustic integrity.

MODELS AB-4230 AB-4240 AB-4250 AB-150 AB-200 AB-2000

The Pre-assembled Eckel Audiometric Booth is designed for: Medical offices and clinical applications, School hearing testing, Industrial hearing conservation programs



AB-200

Eckel Audiometric Booths are the most practical and economic units available - high quality audiometric booths specially engineered to provide outstanding acoustic performance. The advanced design of the Eckel unit features all-welded unitized construction; acoustic integrity, as well as durability, is thereby ensured. No other audiometric booth on the market offers this superior construction and quality. The booth is delivered fully assembled, ready to use, and will readily pass through a 30" clear opening doorway. The large overlapping side entry door with continuous magnetic seals allow the person being tested to enter and exit easily. Standard features include lighting, carpeting, vibration isolators or heavy duty castors, universal jack panel (adaptable to any audiometer), and forced air ventilation.

SPECIFICATIONS

PERFORMANCE:

dB noise reduction: (1/3 Octave Center Frequency) as tested by an independent laboratory per ASTM 596-77.

Hz	125	250	500	1000	2000	4000	8000
	19	28	38	46	>52	>54	>54

CONSTRUCTION:

Eckel Audiometric Booths feature unique all-steel, all-welded construction as standard. Wall thickness is 2" with 16 ga exterior, 22 ga perforated interior.

DOOR:

2" thick overlapping door with continuous perimeter magnetic seals. Door hinges are cam-rise post and socket so that door may be easily removed.

WINDOW:

23" x 23" (584 mm x 584 mm) square framed, double-glazed acoustic window. Interior sound absorbing barrier. Allows excellent visual observation and monitoring. Frame is removable for maintenance or glass replacement.

VENTILATION:

Silenced forced air ventilation is standard. Ventilation is activated when light is turned on. Noise levels with ventilation comply with ANSI standards.

ELECTRICAL:

Unit is pre-wired and includes an 8' (2438mm) 3 wire extension cord which plugs into booth. Lighting fixture incorporates light/fan switch. 120V-60Hz is standard, 240V-50Hz available on request.

JACK PANEL:

Standard jack panel includes six (colour coded) 1/4" N112B phone jacks with plugs. Additional connectors available as accessories for most applications.

FINISH:

Standard finish is textured polyurethane enamel. Standard colour is beige. Other colours available at additional cost.

CARPET:

Commercial quality, colour coordinated carpeting is provided in the booth's interior.

VIBRATION ISOLATORS / H.D. CASTERS

Choice of neoprene in shear isolators mounted on steel rails or H.D. casters (2 swivel, 2 locking).

PACKAGING:

Heavy duty carton on wooden skid.



AB-2000

WEIGHTS

& MEASURES:

			W	Interior D	H	W	Exterior D	H
AB-200	600 lb / 273 kg net wt.		36"	28"	58"	40"	32"	65"
	650 lb / 295 kg ship. wt.	mm	914	711	1473	1016	813	1651
AB-2000	650 lb / 295 kg net wt.		36"	28"	68"	40"	32"	75"
	700 lb / 318 kg ship. wt.	mm	914	711	1727	1016	813	1905

OPTIONAL ACCESSORIES

- Non-standard jacks
- Window in door
- Swivel chair on heavy duty chrome base
- Non-standard colours
- Fold-down shelf

* Specifications subject to change without notice

LIGHT WEIGHT, PORTABLE, EASY TO SET UP AND TAKE DOWN !

MODEL AB-150

SPECIFICATIONS

- All Aluminum Panel Construction
- Acrylic Full Size Double Doors
- 4 - 1/4" (6.3 mm) Phone Jacks (colour coded)
- 1-RS252 Computer Interface
- Painted Standard Medium Grey
- Packaged in Carton
- Shipping Weight 175 lbs (65 kg).
- Assembly By Adjustable Clamping Latch



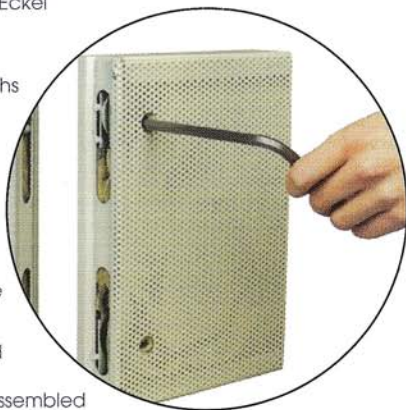
NOISE REDUCTION

Based on Actual Field Tests

Hz	125	250	500	1000	2000	4000
N.R	13	13	20	21	22	20

Model AB-150 is designed to reduce distractions and noise during hearing screening tests in applications such as malls, retirement homes, fairs, etc.

- The cam-locking hardware system used in Eckel AB-4200 series audiometric screening booths is unique
- The units are de-mountable
- The door panel can be rotated in the field to change the door swing
- Can be moved into restricted areas and re-assembled
- Shipped assembled



AB-4200 Series Cam-locking Panels

ECKEL AUDIOMETRIC BOOTH

MODEL AB-4230 | MODEL AB-4240

MODEL AB-4250



MODEL AB-4230
MODEL AB-4240
MODEL AB-4250

Eckel Audiometric Booths are the most practical and economical units available - high quality audiometric booths specially engineered to provide outstanding acoustic performance. The advanced design features cam-lock construction, which provides flexibility in moving, storing, and shipping. The cam-lock design ensures that acoustic integrity, durability and utility remain intact. No other audiometric booth on the market offers this superior construction and quality. The booth is delivered assembled, ready to use. The knock-down packaging is offered as an option or for bulk export shipping. The flush-mounted entry door with continuous magnetic seal allows the person being tested to enter and exit easily. Lighting, carpet, vibration isolators (heavy duty casters are optional), six universal 1/4" (6.3 mm) phone jack panel, and forced air ventilation, are all standard.

SPECIFICATIONS

CONSTRUCTION:

The Eckel Audiometric AB-4200 Series booths feature unique all-steel, cam-locking, interlocking panel, 2" (50 mm) construction.

DOOR:

Heavy flush-mounted door with continuous perimeter magnetic seal. Universal door swing, LH or RH hinge, can be changed in the field by rotating the door panel.

WINDOW:

23" x 23" (584 mm x 584 mm) square framed, double-glazed acoustic window. Interior sound absorbing barrier. Allows excellent visual observation and monitoring. Frame is removable for maintenance or glass replacement.

VENTILATION:

Silenced forced air ventilation is standard. Ventilation is activated when light is turned on. Noise levels with ventilation comply with ANSI standards.

ELECTRICAL:

Unit is pre-wired and includes an 8' (2438 mm) 3 wire extension cord which plugs into booth. Lighting fixture incorporates light/fan switch. 120V-60Hz is standard, 240V-50Hz available on request.

JACK PANEL:

Standard jack panel includes six (colour coded) 1/4" N112B phone jacks with plugs. Additional connectors available as accessories for most applications.

FINISH:

Standard finish is textured polyurethane enamel in light beige; other colours available on request at additional charge.

CARPET:

Commercial quality, colour coordinated carpeting is provided in the booth's interior.

VIBRATION ISOLATORS / H.D. CASTERS

Choice of neoprene in shear isolators mounted on steel rails or H.D. casters (2 swivel, 2 locking).

PACKAGING:

Single units are packaged assembled on a skid and protected by H.D. carton, or bulk crated for shipping.

WEIGHTS

& MEASURES

AB-4230	600 lbs / 273 kg net 650 lbs / 295 kg ship.wt.	38" x 26" x 68" 965 x 660 x 1727mm	42" x 30" 75" 1067 x 762 x 1905mm
AB-4240	710 lbs / 323 kg net 760 lbs / 345 kg ship.wt.	38" x 36" x 68" 965 x 914 x 1727mm	42" x 40" 75" 1067 x 1016 x 1905mm
AB-4250	800 lbs / 363 kg net 870 lbs / 395 kg ship.wt.	38" x 46" x 68" 965 x 1168 x 1727mm	42" x 50" 75" 1067 x 1270 x 1905mm

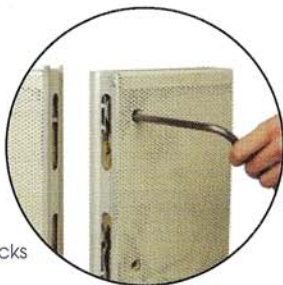
OPTIONAL ACCESSORIES

- Non-standard jacks
- Window in door
- Swivel chair on heavy duty chrome base
- Non-standard colours
- Fold-down shelf
- Shipped Unassembled

* Specifications subject to change without notice

STANDARD FEATURES

- 2" (50 mm) Cam-Lock Panel System
- 27 1/6" W x 70" H Door (687 mm x 1778 mm)
- Universal LHH or RHH Door
- 23" W x 23" H (584 mm x 584 mm) Double Glazed Square Framed Window
- Pre-wired Electrical, Ready to use
- Light Switch, Fan Switch
- Six 1/4" (6.3 mm) Phone Jacks (colour coded)
- In-wall Ventilation
- Vibration Isolators / H.D. Casters
- Colour: Standard Eckel Beige
- Fully De-mountable



G-SERIES Audiometric Examination Rooms

Technical Specifications

Diagnostic examination room will be Eckoustic® G-Series, Audiometric Examination room manufactured by Eckel Industries. The room utilizes high performance 100 mm / 4" G-Series, Cam-Lok panel construction. Standard features will apply unless otherwise noted.

Wall and Ceiling Construction: Wall and ceiling panels are 100 mm / 4" thick fabricated with 14 ga cold rolled steel frames and 16 ga steel outer surfaces, and framing members spaced not more than 610 mm / 24" centers. The inner faces are 22 ga cold rolled steel perforated with 3/32" holes on 5/32" staggered centers. Inside of the outer face panels will be damped with mineral material. Panels will be filled with incombustible and inert acoustical filler having a density of not less than 1.4 kg / 3 lb per cubic foot. Panels interlock and provide an acoustical seal using a minimum of two Cam-Lok interlocking panel connectors and a minimum of two sets of closed cell acoustic rubber seals.

Floor Construction: Floors are 100 mm / 4" thick with 11 ga cold rolled steel walking surfaces, 14 ga cold rolled steel framing members and 16 ga bottom face sheets. Acoustical filler is high density, incombustible mineral wool fill with a minimum density of 1.4 kg / 3 lb per cubic foot. The entire floor floats on vibration isolators and rails. Isolators are rated with a natural frequency of 6.5 Hz.

Door Construction: Doors are 100 mm / 4" thick, of similar construction to that of the walls and ceiling. Door is flush mounted on heavy duty cam lift hinges. A double magnetic gasket sealing system and flush sill seal design assures the acoustic seal. Standard door is 927 mm x 1918 mm with an opening of 813 mm x 1873 mm (36-1/2" x 75-1/2" with an opening of 32" x 73-3/4"), and is of out-swinging design.

Window Construction: Double-glazed 610 mm x 762 mm (24" x 30"). Window is constructed using 6 mm (1/4") safety glass and is set in the panel using a visco-elastic gasket.

Ventilation: Ventilation silencers are wall or ceiling mounted. A total of two silencers, an intake and exhaust, are provided for each room. Silencers are designed to provide up to 250 cfm each with an entrance velocity of less than 300 cfm. The system will not generate noise levels in excess of those specified by ANSI S-1 1991 standards.

Electricity and Lighting: Rooms are equipped with at least one double head incandescent light and one duplex receptacle. Optional additional lighting and electrical outlets are available. Electrical service runs inside the acoustic wall system whenever possible, and is connected to the outside by way of a surface exterior mounted electrical box.

Clinical Jack Panel: A pre-wired jack panel is provided with nine (3-wire) phone jacks, one Cinch Jones 303 and one 304 connector, and a 1" (25 mm) capped pass-through connection. The panel face is removable and will not detract from the room's acoustical performance.

Finish: The interior and exterior surfaces are finished with a durable commercial enamel. The standard colour is beige, however, custom colours are available.

Noise Reduction: The audiometric room tested in room configuration by an independent laboratory shall exhibit the following minimum characteristics when tested per ASTM E596-77.

- data subject to change without notice
- Attenuation may vary slightly depending on the acoustical environment.

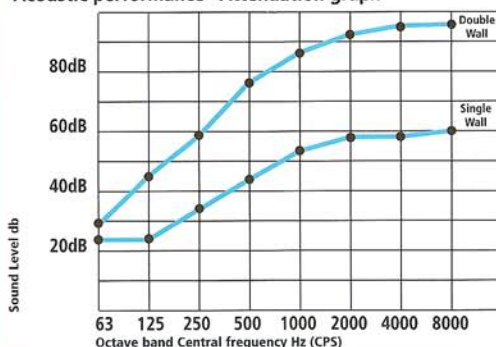
Optional Features:

- One Way Glass
- Special Paint Colours
- Special Oversize Windows
- Non-Standard Jack Panel
- Extra or Special Lighting
- RF Shielding Package

**ACOUSTIC PERFORMANCE
ATTENUATION**

HERTZ	Single Wall	Wall
63	24	29
125	24	44
250	32	59
500	44	75
1K	53	86
2K	58	91
4K	59	>95
8K	59	>95

Acoustic performance Attenuation graph



ECKEL
NOISE CONTROL TECHNOLOGIES

Audiometric Suites

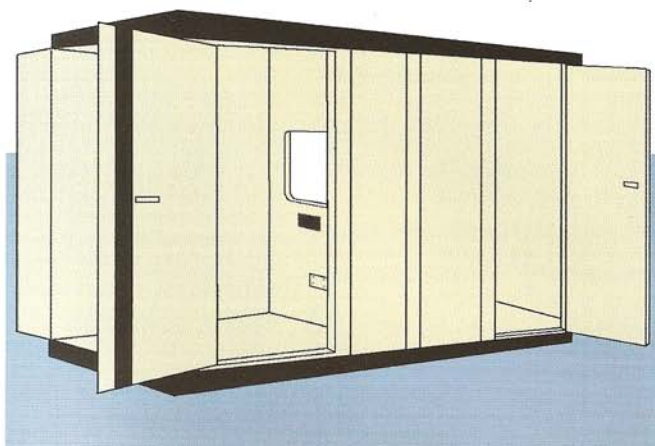
Single Wall

Two single wall examination rooms can be united to form an audiometric suite. The noise reduction characteristics therefore correspond to the attenuation of a single wall room.

However the attenuation of one room with regards to the other resembles the attenuation characteristics of a double wall room.

The audiometric suites are equipped with a wide 30 window as are the majority of our rooms. This offers a particular advantage when testing young children.

For applications requiring strict acoustic control in both test and control environments.



DIMENSIONS

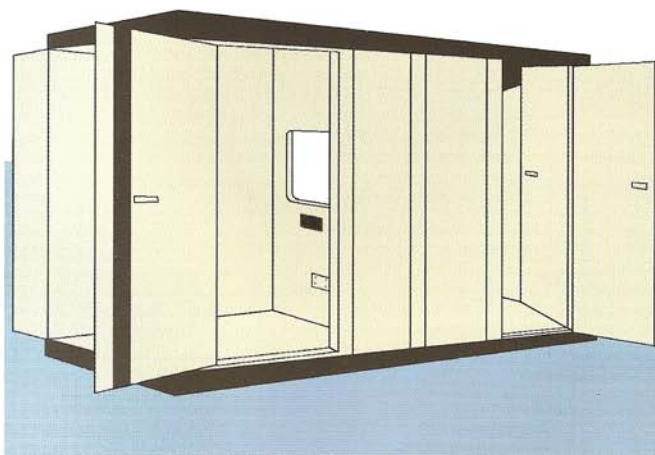
Model	Control Room	Exam Room	Outside Dimension
S34	5'6" x 4'8" x 6'6" 1676 x 1422 x 1981 mm	5'6" x 6'5" x 6'6" 1676 x 1956 x 1981 mm	6'2" x 12'9" x 7'9" 1880 x 3886 x 2362 mm
S45	6'5" x 5'6" x 6'6" 1956 x 1676 x 1981 mm	6'5" x 7'4" x 6'6" 1956 x 2235 x 1981 mm	7'1" x 14'6" x 7'9" 2159 x 4420 x 2362 mm
S56	7'4" x 6'5" x 6'6" 2235 x 1956 x 1981 mm	7'4" x 8'3" x 6'6" 2235 x 2515 x 1981 mm	8'0" x 16'4" x 7'9" 2438 x 4978 x 2362 mm
S57	8'3" x 7'4" x 6'6" 2515 x 2235 x 1981 mm	8'3" x 9'2" x 6'6" 2215 x 2797 x 1981 mm	8'11" x 18'2" x 7'9" 2718 x 5537 x 2362 mm

Single Wall Control / Double Wall Examination-Rooms

This is the suite that so many hospitals insist on having.

The double wall examination room assures maximum patient cooperation while the single wall control room permits live voice speech testing without any interference from outside noise. The control room has a single door and examination room has a double door system.

These audiometric suites are available with or without a floor in the control room. Designed for trouble-free testing.

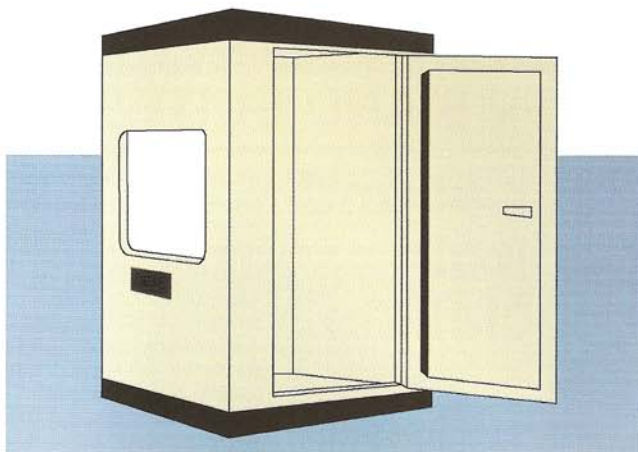


DIMENSIONS

Model	Control Room	Exam Room	Outside Dimension
S121	7'4" x 5'6" x 7'9" 2235 x 1676 x 2362 mm	6'0" x 6'8" x 6'6" 1829 x 2032 x 1981 mm	8'0" x 14'6" x 8'1" 2438 x 4420 x 2464 mm
S122	8'3" x 6'5" x 7'9" 2515 x 1956 x 2362 mm	6'11" x 7'7" x 6'6" 2108 x 2311 x 1981 mm	8'11" x 16'4" x 8'1" 2718 x 4978 x 2464 mm
S123	9'2" x 7'4" x 7'9" 2794 x 2235 x 2362 mm	7'10" x 8'6" x 6'6" 2388 x 2591 x 1981 mm	9'10" x 18'2" x 8'1" 2997 x 5537 x 2464 mm
S124	10'1" x 8'3" x 7'9" 3073 x 2515 x 2362 mm	8'9" x 9'5" x 6'6" 2667 x 2870 x 1981 mm	10'9" x 20'0" x 8'1" 3277 x 6096 x 2464 mm

Optional floor in control room available, consult factory

Audiometric Rooms



Single Wall

The C10 series are ideal for industry and private clinics.

The smaller models have the inlet silencer in the rear wall and the exhaust silencer integrated in the ceiling.

In the larger models, both silencers are in the ceiling panels. All models have a clinical Jack panel for greater versatility.

In both cases, the walls are mounted on the audiometric room floor which in turn rests on "air cushion" vibration isolator rails.

Ideal for sound field measurements, brain stem audiometry, hearing aid evaluation.

DIMENSIONS

Model	Inside	Outside
C11	33" x 44" x 6'6" 838 x 1118 x 1981 mm	3'5" x 4'4" x 7'9" 1041 x 1321 x 2362 mm
C12	44" x 55" x 6'6" 1118 x 1397 x 1981 mm	4'4" x 5'3" x 7'9" 1321 x 1600 x 2362 mm
C13	4'8" x 5'6" x 6'6" 1422 x 1676 x 1981 mm	5'3" x 6'2" x 7'9" 1600 x 1800 x 2362 mm
C14	5'6" x 6'5" x 6'6" 1676 x 1956 x 1981 mm	6'2" x 7'1" x 7'9" 1800 x 2159 x 2362 mm
C15	6'5" x 7'4" x 6'6" 1956 x 2235 x 1981 mm	7'1" x 8'0" x 7'9" 2159 x 2438 x 2362 mm
C16	7'4" x 8'3" x 6'6" 2235 x 2515 x 1981 mm	8'0" x 8'11" x 7'9" 2438 x 2718 x 2362 mm
C17	8'3" x 9'2" x 6'6" 2515 x 2794 x 1981 mm	8'11" x 9'10" x 7'9" 2718 x 2997 x 2362 mm



Double Wall

The C20 series offers higher noise reduction characteristics which are a must in areas where the ambient noise levels are excessively high.

The interior walls are mounted on the audiometric room floor while the exterior walls are placed on the existing floor. Each double wall room is provided with a combination in-swing and out-swing, flush sill, magnetic seal doors.

When necessary, the audiometric rooms can be modified (dimensions, door, window placement, etc.) to your specific requirements.

Suitable for clinical and research applications.

DIMENSIONS

Model	Inside	Outside
C24	5'6" x 6'5" x 6'6" 1676 x 1956 x 1981 mm	7'5" x 8'5" x 8'1" 2261 x 2565 x 2464 mm
C25	6'5" x 7'4" x 6'6" 1956 x 2235 x 1981 mm	8'5" x 9'4" x 8'1" 2565 x 2845 x 2464 mm
C26	7'4" x 8'3" x 6'6" 2235 x 2515 x 1981 mm	9'4" x 10'3" x 8'1" 2845 x 3124 x 2464 mm
C27	8'3" x 9'2" x 6'6" 2515 x 2794 x 1981 mm	10'3" x 11'2" x 8'1" 3124 x 3404 x 2464 mm

MEDICAL AND SCIENCES AUDIOLOGICAL ROOMS AND SUITES BY ECKEL...

Your sound control specialists.

Eckel offers a wide range of standard rooms and custom-made suites to meet audiological clinical and research requirements. All combine high performance, versatile design and economy. Eckel acoustically engineered G-Panel construction affords excellent noise reduction. Choose from 19 demountable (G-Series panels) standard models and custom-made rooms for your specific needs. Rooms are easy to install, easy to take down and move.

All Eckel models feature these advantages:

- 4" G-series Cam-Lok attenuating panels.
- Efficient and silent ventilation system.
- Double-glazed safety glass window.
- Flush sill door with magnetic gasket seal.
- Non-visible, internal electrical wiring.
- Incandescent light fixtures – Jack panels – Non-flammable carpet.
- "Air Cushion" vibration isolators.

Custom designs are available to utilize existing space.

G-SERIES Panel System



ECKEL
NOISE CONTROL TECHNOLOGIES

STUDIOS FOR THE BROADCAST & COMMUNICATIONS INDUSTRY

FEATURING THE ECKEL CAM-LOCKING, DEMOUNTABLE PANEL SYSTEM

ECKEL offers a wide range of standard and custom made studios, newsrooms, translation booths, etc.

All combine high performance coupled with versatile design and economy.

All Eckel Studios feature these advantages...

- 4" Cam-Locking attenuating panels, a fully demountable system
- Single and double wall construction
- Efficient, silent ventilation systems
- Single, double and triple safety glass window designs
- Flush sill doors with double magnetic gasket seals
- Non-visible, internal electrical wiring
- Vibration Isolated floors or Low Profile, easy access floor design
- Wide variety of lighting options
- Custom designs to utilize existing space



ACOUSTIC PERFORMANCE ATTENUATION

HERTZ	SINGLE WALL	DOUBLE WALL
63	24	29
125	24	44
250	32	59
500	44	75
1K	53	86
2K	58	91
4K	59	>95
8K	59	>95

ECKEL
INDUSTRIES OF CANADA LIMITED

TYPICAL CONSTRUCTION

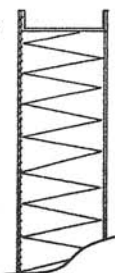
Enclosure wall and roof panel construction is 16 ga. steel outer skin and welded internal framing members on 24" (600mm) centers. The inner skin is 22 ga. perforated steel (approximately 49 % open area). The panels are filled with minimum 4 lb. (64kg/m²) acoustical absorbant infill which is inert, midew and vermin resistant.

The panels may be CRS steel, galvanized steel, prime and / or finished painted. Contact the factory for choice of standard colours and options.

Other types of panel construction are available, using various material for more specialized and custom applications. Consult our individual product brochures or the factory for details.

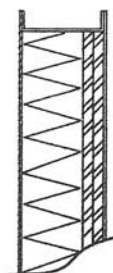
TYPE 1. C-PANEL

For use in areas with relatively loud mid-frequency noise. Standard four inch panel with 16 gauge outer surface. 22 gauge perforated inner surface with four inch acoustical filler.



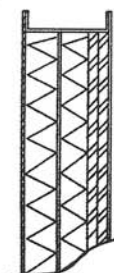
TYPE 2. CD-PANEL

For use in areas requiring higher noise reduction. Same construction as type 1 with addition of gypsum board barrier.



TYPE 3. XHD-PANEL

For use in areas with extremely high noise levels or when low frequency noise is a problem. Same basic construction as type 1 & 2 panels with the addition of gypsum board barrier and steel septum.



DOORS

Doors are available in the same style as panels Type 1,2 or 3, LHH or RHH swing, and in single or double configuration. Magnetic gasket seals, neoprene seals, mechanical closures are among the options available. Custom sizes and styles are available, consult the factory for details.

Standard single size 24"W x 80"H

Standard double size 48"W x 80"H

WINDOWS

Single glazed windows are usually used with Type 1 panels, double glazed windows are usually used with Type 2 and Type 3 panels. Triple glazed windows and operating windows are available as options, consult the factory for details.

NOISE REDUCTION

Noise reduction will vary with the type and design of panel. Eckel Industries will recommend the panel style to suit the acoustical characteristic required by the customer.

Panels are tested by an acoustic laboratory according to the ASTM C-423 and ASTM E-60 standards.

TRANSMISSION LOSS (dB) ASTM E-90

FREQUENCY (Hz)	125	250	500	1000	2000	4000	STC
Type 1. C-Panel	19	30	39	50	58	60	41
Type 2. CD-Panel	26	33	39	48	57	61	44
Type 3. XHD-Panel	31	44	57	63	68	67	53

ABSORPTION COEFFICIENTS ASTM C-423

FREQUENCY (Hz)	125	250	500	1000	2000	4000	NRC
Type 1. C-Panel	0.71	1.14	1.16	1.06	1.04	1.13	.95
Type 2. CD-Panel	0.51	1.10	1.12	1.06	1.05	0.93	.95
Type 3. XHD-Panel	0.58	0.66	1.06	1.11	1.03	0.84	.95